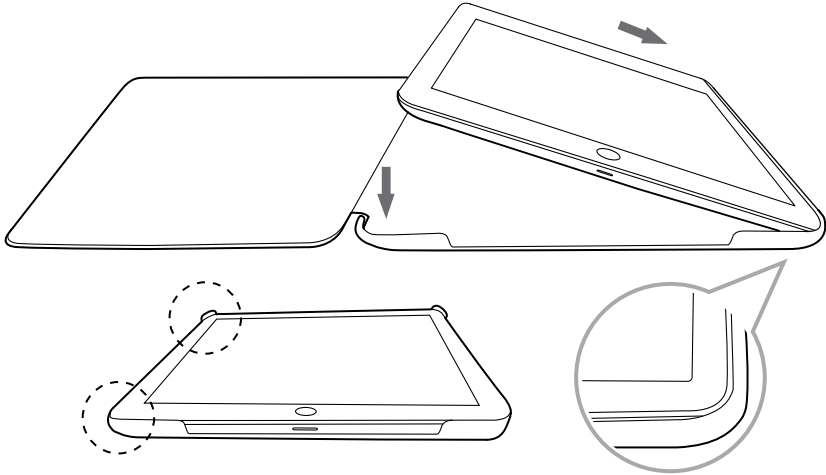


Insert iPad

Step 1

Firstly, align your iPad Air 2 along the right edge of the cover.



Step 2

Ensure both top and bottom corners of the right edge are fixed properly.

Step 4

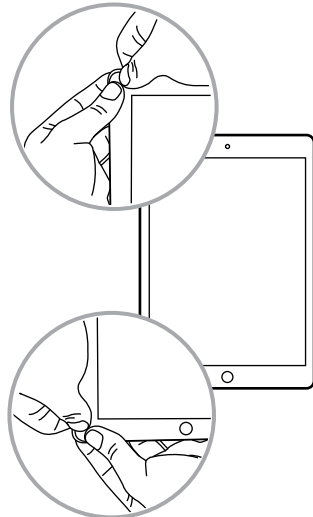
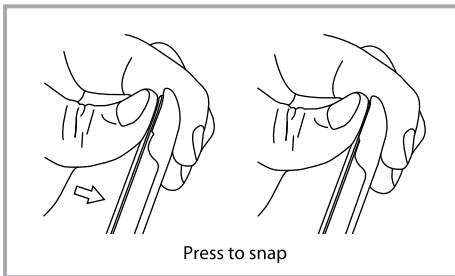
Hold the top left corner, and press it gently until tightened.

Step 5

Then, press the bottom right corner gently until tightened.

Step 3

Now, your iPad Air 2 should be horizontally placed over the cover.



Precision installation of the iPad cover is essential

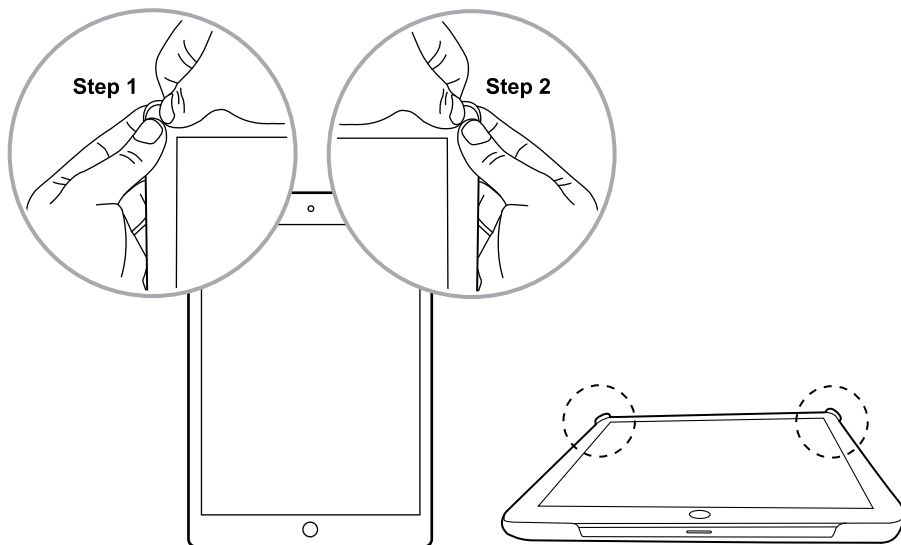
Remove iPad

Step 1

Press the upper left corner of the Slim Cover gently until untightened.

Step 2

Then press the upper right corner of the Slim Cover gently until untightened.



Step 3

You are now able to gently pull the iPad out of the Slim Cover.