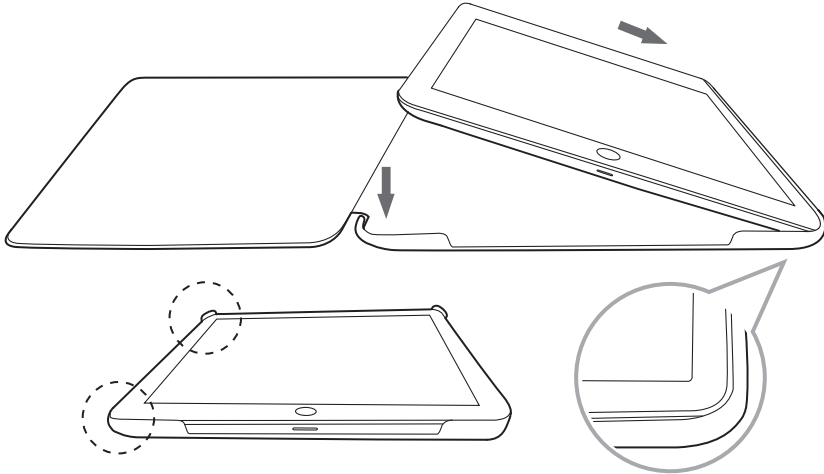


Insert iPad

Step 1

Firstly, align your iPad Air along the right edge of the cover.



Step 2

Ensure both top and bottom corners of the right edge are fixed properly.

Step 3

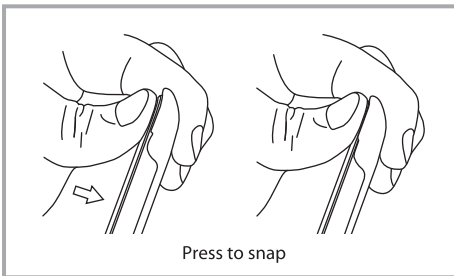
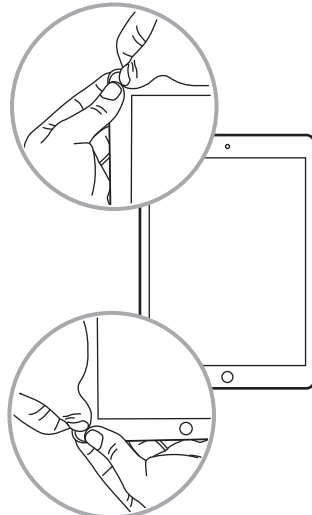
Now, your iPad Air should be horizontally placed over the cover.

Step 4

Hold the top left corner, and press it gently until tightened.

Step 5

Then, press the bottom right corner gently until tightened.



Precision installation of the iPad cover is essential